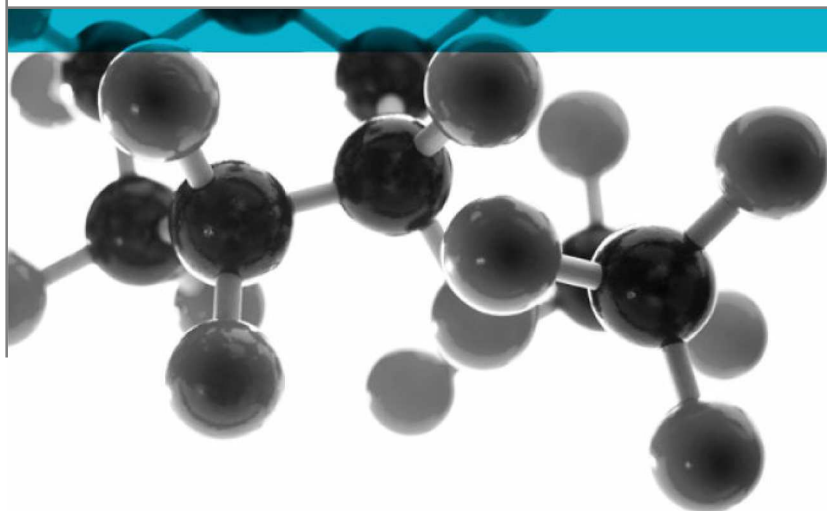


Exova Warringtonfire
Key Industrial Park
Fernside Road
Willenhall
West Midlands
WV13 3YA

T : +44 (0) 1902 722 122
F : +44 (0) 1902 727 242
E : willenhall@exova.com
W : www.exova.com



BS EN 1906:2012



TESTS OF SPRUNG LEVER HANDLES

A Report To: Haefele GmbH & Co. KG
Postfach 1237
D-72192 Nagold
Germany

Date: 06/05/2015

Copy: 1

Issue No.: 1

Page 1

Document Reference: WIL 348519-1

Testing
Advising
Assuring



0621

This report is issued in accordance with our terms and conditions, a copy of which is available on request.

Registered Office: Exova (UK) Ltd, Lochend Industrial Estate, Newbridge, Midlothian EH28 8PL United Kingdom. Reg No.SC 70429

TEST CONCLUSIONS

Samples of: Sprung Lever Furniture

Manufacturer Hafele GmbH & Co. KG

Product : Sprung Lever Furniture

Model : LDH2169, LDH2170, LDH2171, LDH2172, LDH2174, LDH2176, LDH2178, LDH2180,
 LDH2181, LDH2184, LDH2188, LDH2189, LDH2190, LDH2191, LDH2193, LDH2195,
 LDH2197

have been tested in accordance with:

BS EN 1906:2012 (Building Hardware – Lever Handles and Knob Furniture)

By Exova Warringtonfire [A UKAS accredited Testing Laboratory (No. 0621) and EC Notified Body number 1104]

At Key Industrial Park, Fernside Rd., Willenhall. West Midlands. WV13 3YA.

Results and comments as detailed below:

Clause No.	Description	Compliance
5	Requirements at Grade 2	
5.2	Check of Spindle and Fastening Elements	Yes
5.5	Free play	Yes
5.5.2	Safety requirements	Yes
5.6	Free angular movement or misalignment	Yes
5.7	Torque of return mechanism	Yes
5.8	Durability of mechanism	Yes
5.9	Repeat of Axial strength of lock furniture and fixing	Yes
5.10	Repeat of Free play measurement	Yes
5.11	Repeat of Free angular movement or misalignment	Yes
5.12	Repeat of Torque of return mechanism	Yes
5.13	Axial strength for safety furniture(optional)	NT
5.3	Rotational Torque strength	Yes
5.14	Corrosion Resistance	Yes
8	Marking	Yes
C.2	Requirements for lock furniture for use on fire doors	N/a

No inferences can be made regarding performance against other requirements of this standard

Tests marked " NA" are not applicable to the type of device under test.

Tests marked "NT" cannot be applied to the type of device under test

Document No.: WIL348519-1

Page No.: 2 of 19

Author: I Keeling

Issue Date: 06/05/2015

Client: Hafele

Issue No.: 1



Annex C Suitable for Use on fire door assemblies:

Tested in a door assembly which satisfies criteria of EN 1634 – 1

Test report No.

Dated

Result – Details

Suitability of this product for use on fire doors could not be verified, as no fire test evidence was available.

Classification achieved.

Category of use	Durability	Door mass	Fire resistance	Safety	Corrosion resistance	Security	Type of operation
1 - 4	6 or 7	--	0 or 1	0 or 1	0 - 4	0 - 4	A, B, or U
2	6	-	0	0	3	0	B

Clause 8 marking

Product and or literature, packing etc Should be marked with:

Manufacturer’s name or Trade mark. Häfele

Product model identification 903.82.140

Classification according to clause 4 26-0030B

Standard number EN1906:2012

The year and week of manufacture – may be in coded form Yes

Document No.: WIL348519-1

Page No.: 17 of 19

Author: I Keeling

Issue Date: 06/05/2015

Client: Hafele

Issue No.: 1

